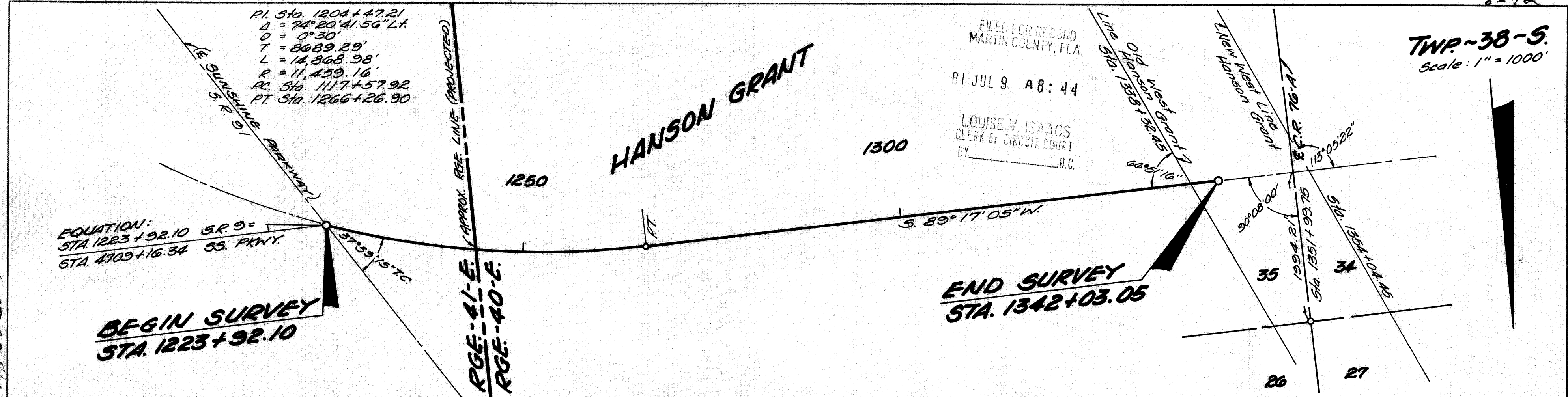


TWP-38-S.  
Scale: 1" = 1000'



FILED FOR RECORD  
MARTIN COUNTY, FLA.  
81 JUL 9 A8:44

LOUISE V. ISAACS  
CLERK OF CIRCUIT COURT  
BY \_\_\_\_\_ D.C.

END SURVEY  
STA. 1342+03.05

EQUATION:  
STA. 1223+92.10 S.R. 9 =  
STA. 4709+16.34 S.S. PKWY.

BEGIN SURVEY  
STA. 1223+92.10

I, Jacob D. Varn, as Secretary of the State of Florida Department of Transportation, do hereby certify that this map is the Official Map of Location and Survey of a portion of Section 89095 designated as a part of State Road 9 in Martin County, Florida: Said portion of Section 89095 extending from State Road 91 (Sunshine Parkway) Westerly to a point in Section 35, Township 38 South, Range 40 East, Hanson Grant.

Prepared and adopted by the State of Florida Department of Transportation under provisions of Section 335.02, Florida Statutes of 1955.

Jacob D. Varn  
Secretary of Transportation  
State of Florida Department of Transportation

Attest: Joyce A. Yarn  
Executive Secretary

Approved: Carl P. Ratcliff  
For: Engineer of Right of Way  
Date: 6-12-81

Filed for record in the Office of the Clerk of the Circuit Court for the County of Martin, State of Florida, in Book 8, Page 72, on the 9th day of July, A.D. 1981.

File No: 415494

Louise V. Isaacs  
Clerk of the Circuit Court  
Martin County, Florida  
By Charlotte Burkey, D.C.

STATE OF FLA.  
Department of Transportation  
1317 N.E. Fourth Avenue  
Fort Lauderdale, Florida 33304